

Truss Lite



TETRIX
portable displays

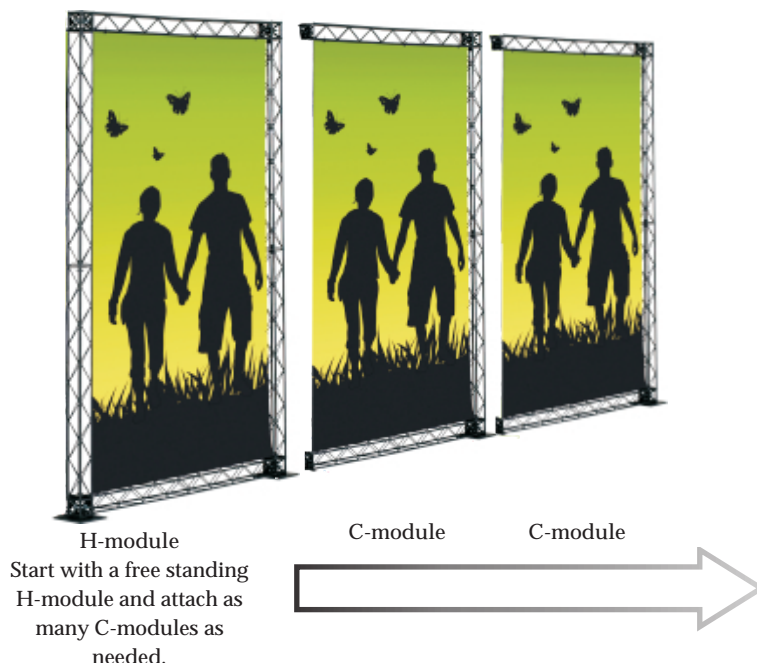
Truss Lite

Truss Lite is a true 2-in-1 solution. You can combine the good looks of a truss system and have a printed wall surrounding your stand at the same time. Truss Lite is a fiberglass + aluminum composite that is very light-weight and versatile. The 10x10 cm structures can be combined in 90° angles vertically and horizontally to form shapes that only your imagination can hold back.

The printed canvas can easily be updated in each module, and is very cost effective. The Truss Lite system can be expanded over time, and carefully planned the system can be utilized for many different exhibitions and spaces. Module widths are 100 cm or 150 cm, and the height always 250 cm.

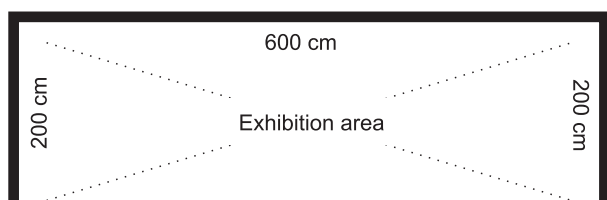
Exhibition wall - Easy to design

Begin with measuring the wall area of your stand and then place in 100 or 150 cm modules so that they cohere with the length of the total wall. Start with a H-module (with two vertical legs) and then add as many C-modules as needed to reach full length of the wall.



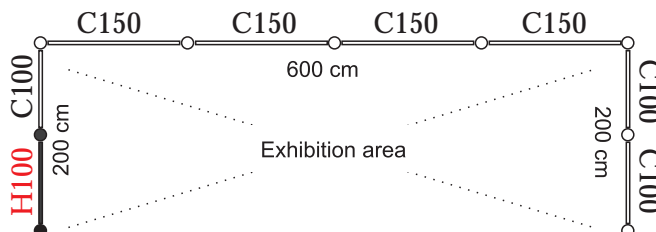
Exhibition wall - Example

Just follow the outlines of your exhibition area. The system is designed to fit inside the given measurements.



Total Wall Length
 $200+600+200 = 1000$ cm

The stand requires 1000 cm
 or 10 meters of wall length.



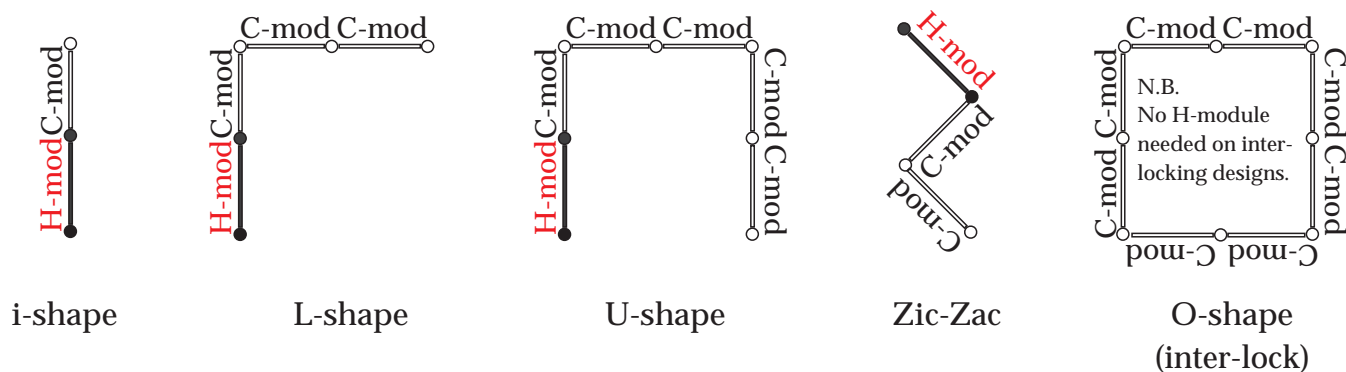
Solution
 Mix 100 and 150 cm
 wide modules.

H100 = 1 pcs
 C100 = 3 pcs
 C150 = 4 pcs

= 10 meters of wall

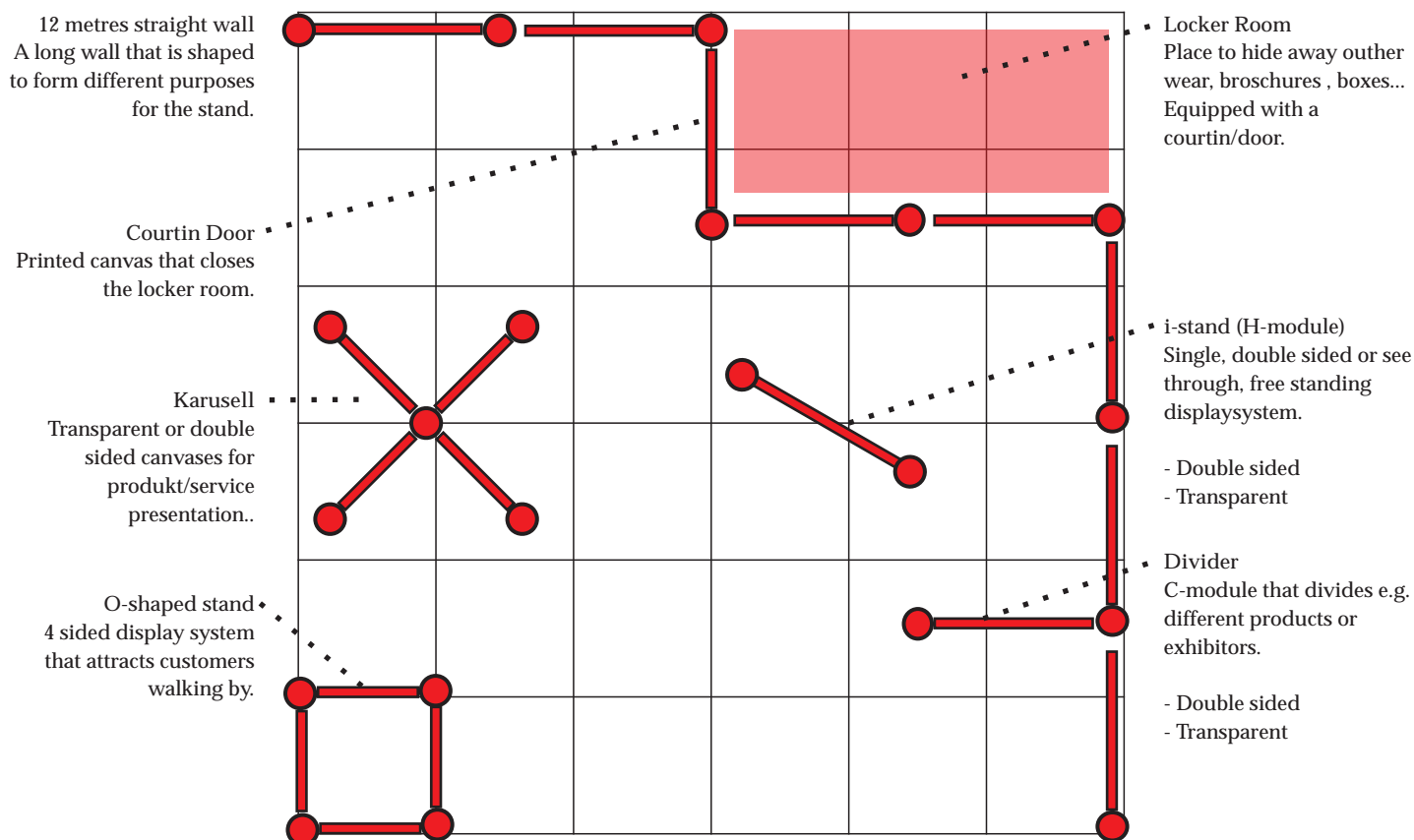
Truss Lite

As mentioned the system is very versatile and can be built in any angle or shape, according to your need. It can be built in a straight line (i-stand) or with one angle (L-stand), it can be fitted into three wall exhibition stands (U-stand), Zic-Zac shape or even interlock as a O-shaped system if you wish.



Designing your stand

You can freely design your own stand and add extras to it. Think outside of the box and make yourself an exhibition booth that meets all your requirements. When you know the size and measurements of your stand, just draw checkers on a sheet and start designing.



Truss Lite

There is no other truss system on the market that can offer such a broad spectra of possibilities, in this kind of price range.



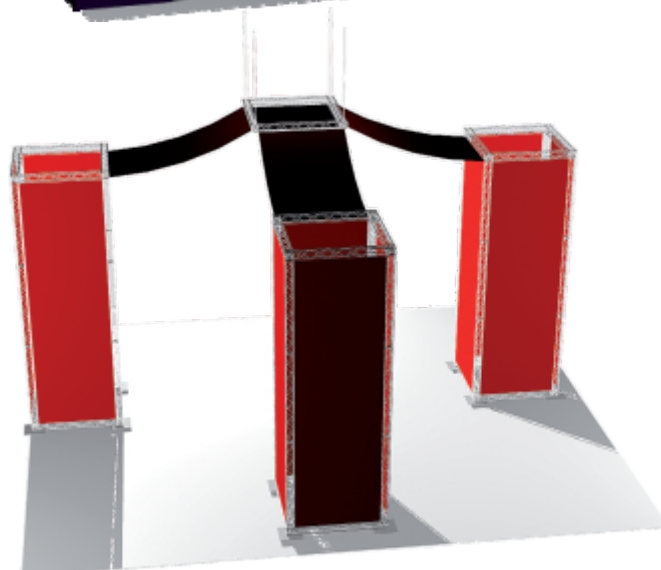
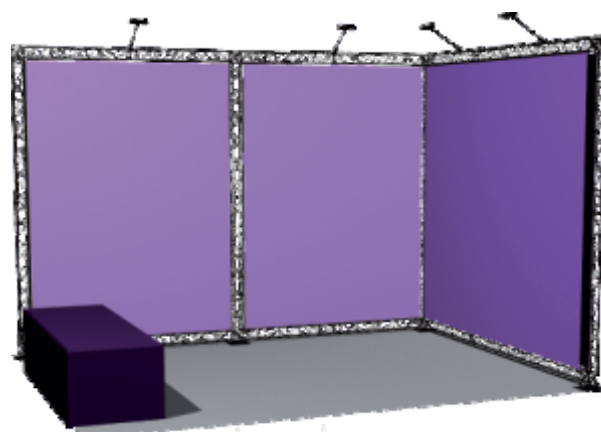
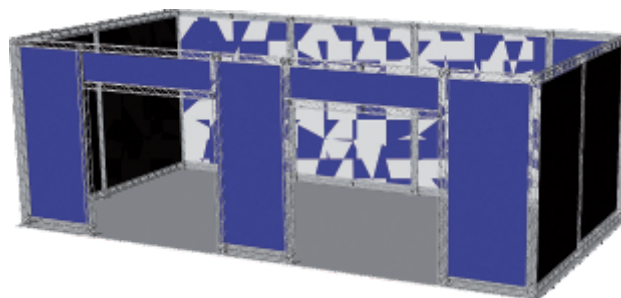
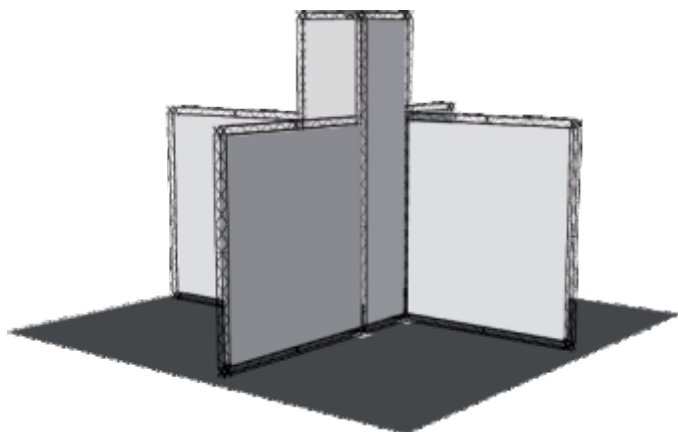
The system will give you true freedom of design and modules can be used as stand-alone or connected to each other - you choose

Picture layout. Take the width between the outer poles of the wall. When the design is done; cut out the 10 cm space where the vertical legs are in the middle of your continuous picture.



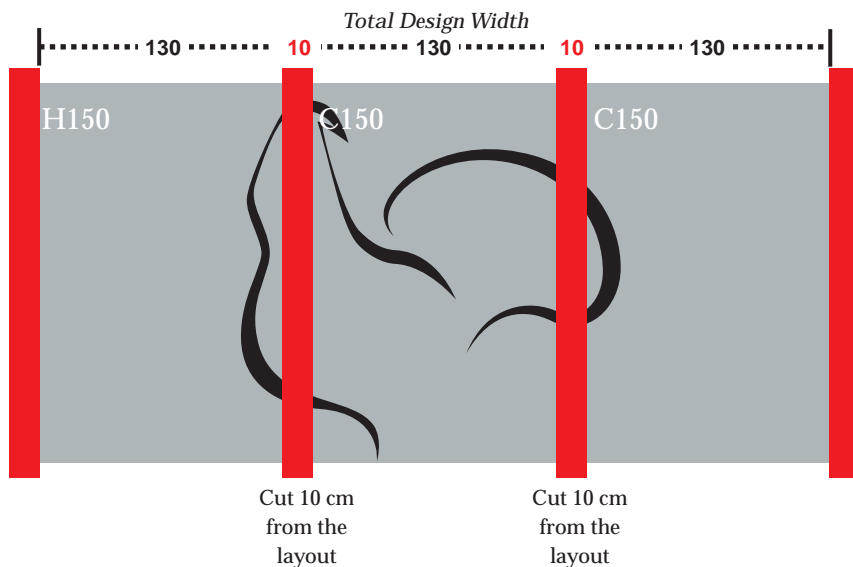
Truss Lite

Truss Lite offers much more design possibilities and is very versatile and easy to use.



Truss Lite

Designing the layout for Truss Lite is easy. Just follow the given sizes and consider the 10 cm width of the vertical legs. When you have a continues layout that stretches over several modules, first design the whole length of the displaysystem and then cut away the leg area - for best result. If some canvases are going to be updated frequently, then consider this in the design.



When making a layout that continues over several modules; begin with a background covering the full width (including poles and canvas) and cut away the 10 cm width of the vertical legs after finishing the design.

Canvas/Design size of modules

Total widths (including vertical poles) of combined, 250 cm high modules:

- 1 H150 module = 150 cm
- 2 modules (1 x H150 + 1 x C150 module) = 290 cm
- 3 modules (1 x H150 + 2 x C150 modules) = 430 cm
- Add 140 cm width for every additional C150 module...

- H100 module = 100 cm
- 2 modules (1 x H100 + 1 x C100 module) = 190 cm
- 3 modules (1 x H100 + 2 x C100 modules) = 280 cm
- Add 90 cm width for every additional C100 module.

230 cm

H150 & C150
130 cm

H100 & C100
80 cm

Copyright 2010 Ab TETRIX Oy



Truss Lite
offers more.



