

Fabric Lite Monter



TETRIX
portable displays

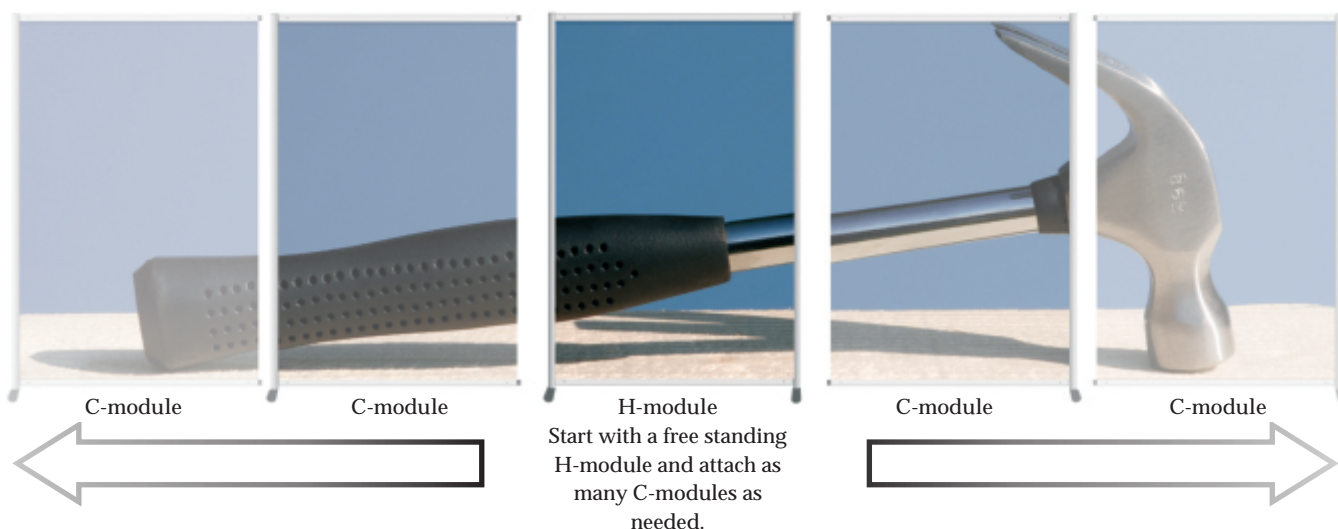
Fabric Lite Monter

Fabric Lite is more than just a wall at the back of your stand – it is a flexible and versatile system that can be used in many different ways and sizes. There is no need for separate banner stands, posters or display walls as the system can be used effectively for all these purposes.

The printed canvas can easily be updated in each module, and is very cost effective. The Fabric Lite system can be expanded over time, and carefully planned the system can be utilized for many different exhibitions and spaces. It can be built in almost any shape and size as there are 8 rails in 45 degree steps around every vertical pole, thus giving you ultimate flexibility. Module widths are 100 cm or 150 cm, and the height always 250 cm.

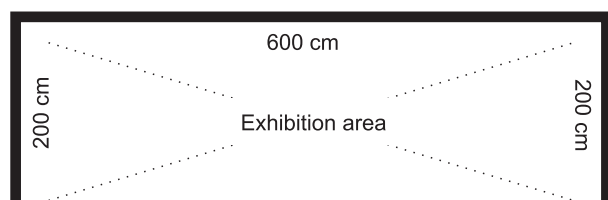
Exhibition wall - Easy to design

Begin with measuring the wall area of your stand and then place in 100 or 150 cm modules so that they cohere with the length of the total wall. Start with a H-module (with two vertical poles) and then add as many C-modules as needed to reach full length of the wall.



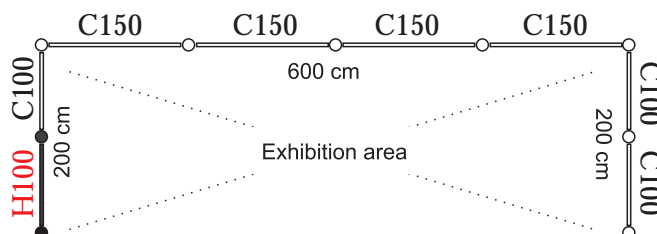
Exhibition wall - Example

Just follow the outlines of your exhibition area. The system is designed to fit inside the given measurements.



Total Wall Length
 $200+600+200 = 1000$ cm

The stand requires 1000 cm
 or 10 meters of wall length.



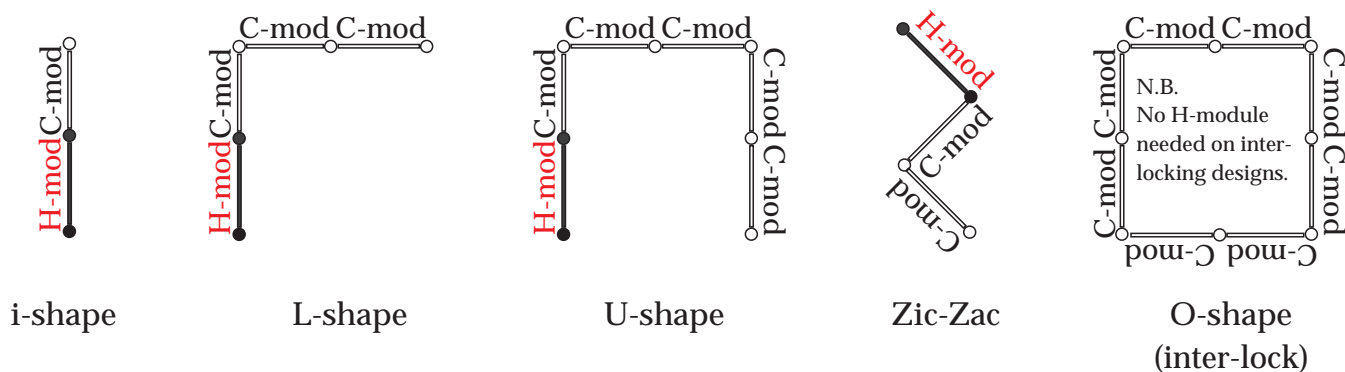
Solution
 Mix 100 and 150 cm
 wide modules.

H100 = 1 pcs
 C100 = 3 pcs
 C150 = 4 pcs

= 10 meters of wall

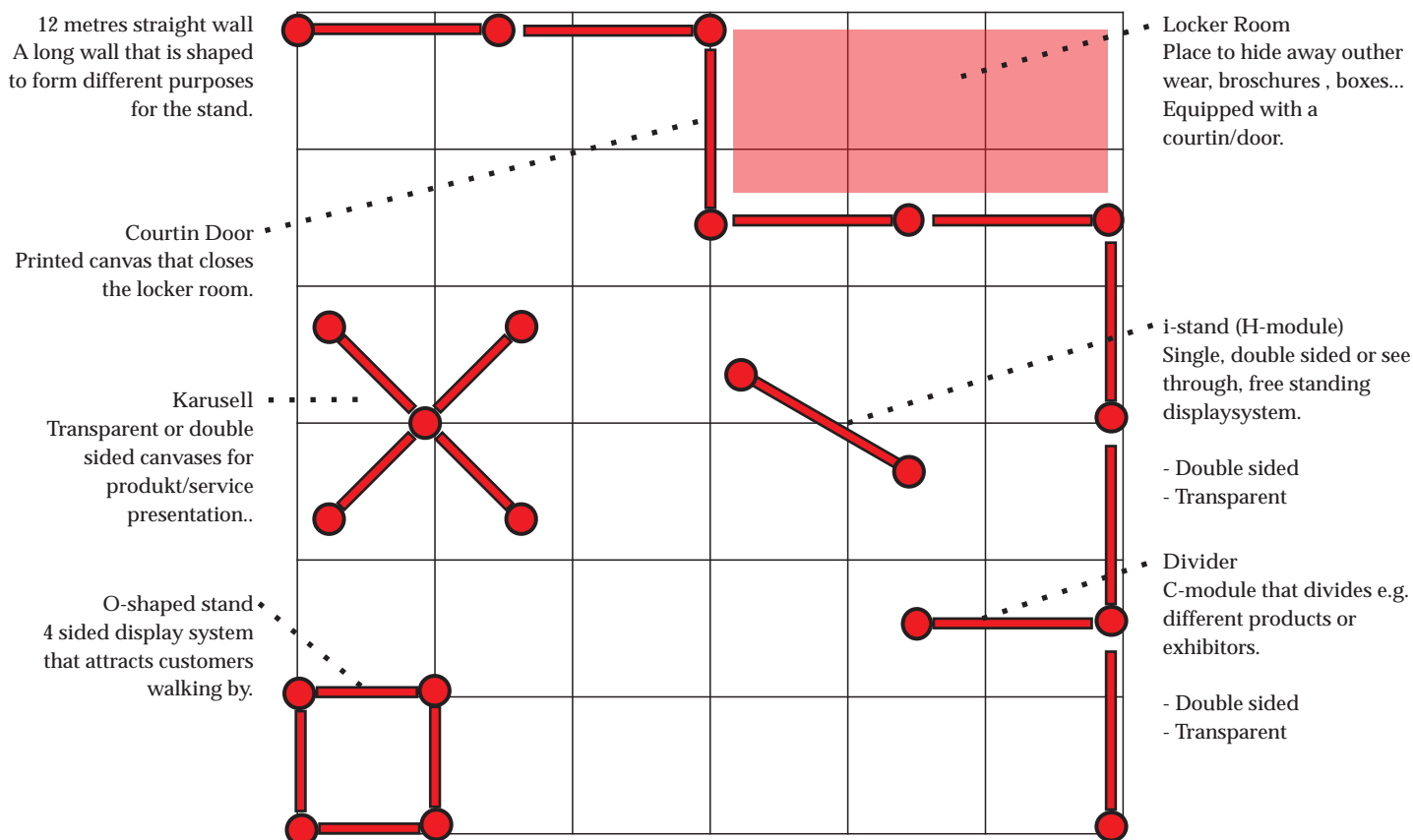
Fabric Lite Monter

As mentioned the system is very versatile and can be built in any angle or shape, according to your need. It can be built in a straight line (i-stand) or with one angle (L-stand), it can be fitted into three wall exhibition stands (U-stand), Zic-Zac shape or even interlock as a O-shaped system if you wish.



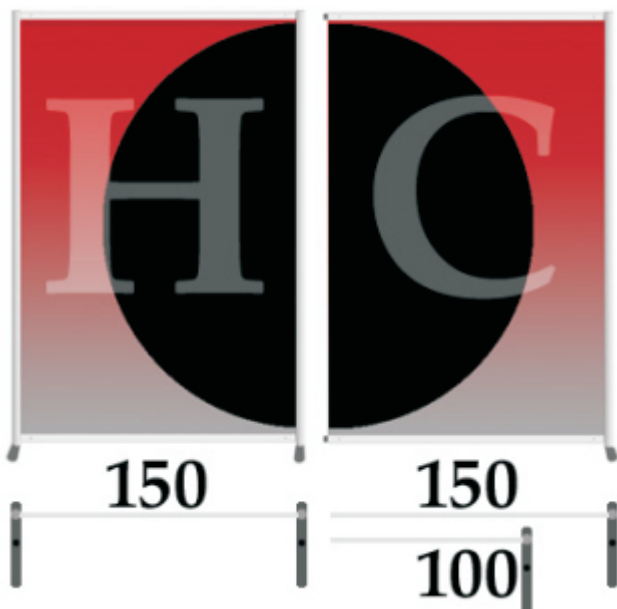
Designing your stand

You can freely design your own stand and add extras to it. Think outside of the box and make yourself an exhibition booth that meets all your requirements. When you know the size and measurements of your stand, just draw checkers on a sheet and start designing.



Fabric Lite Monter

There is no other display/wall system on the market that can offer such a broad spectra of possibilities. The Fabric Lite Monter offers you so much more design and structural possibilities ...and what more, it beats the price of most systems on the market.



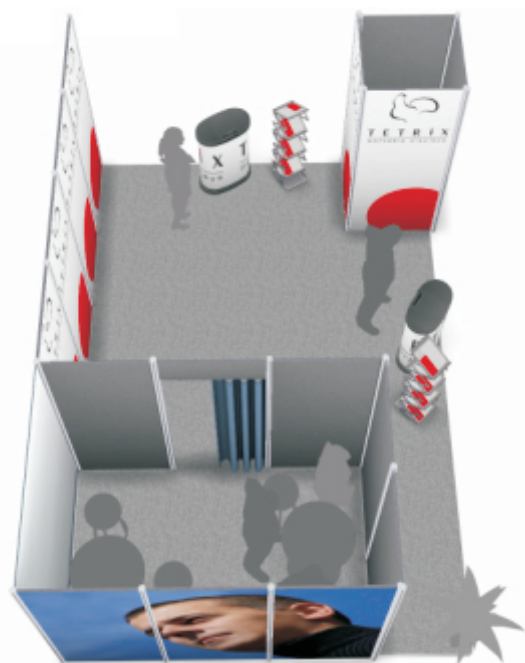
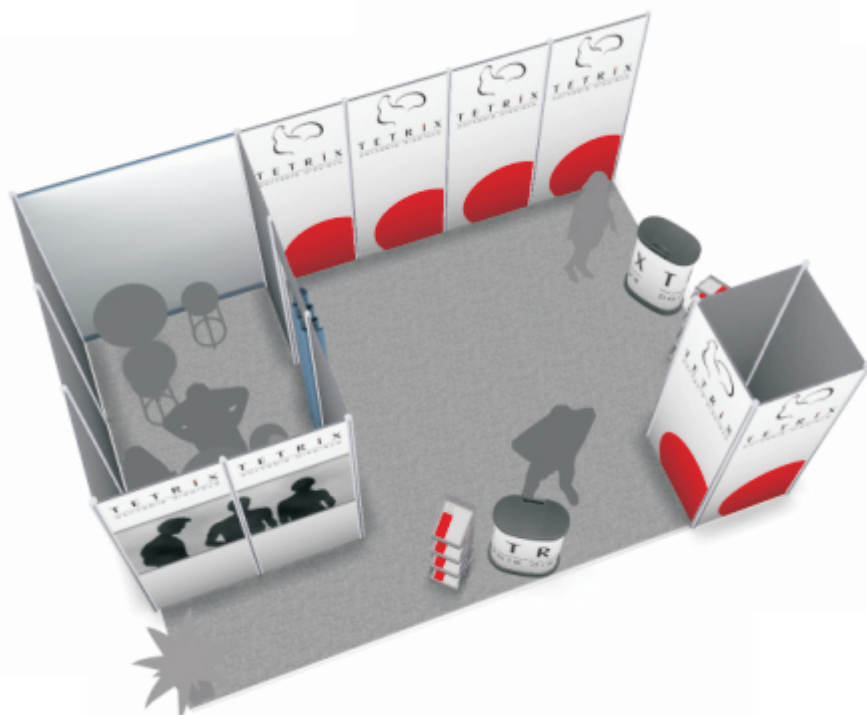
The building blocks of a Fabric Lite Monter system are the 100 or 150 wide modules. Just start with a H-module and add on as many C-modules needed to finish the design.

Picture layout. Take the width between the outer poles of the wall. When the design is done; cut out the 4 cm space where the vertical poles are in the middle of your continuous picture.



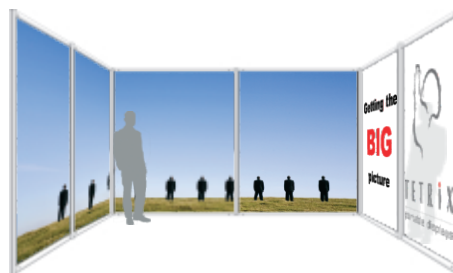
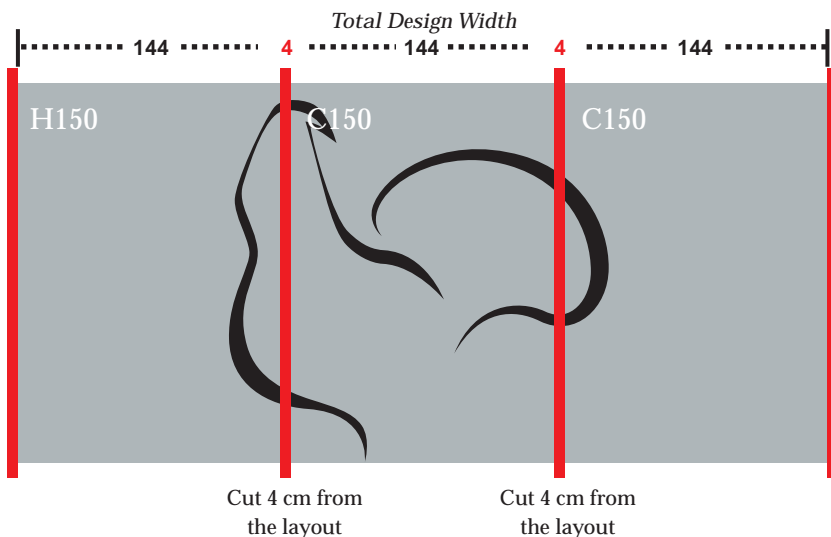
Fabric Lite Monter

Think out of the box. With Fabric Lite Monter you can ad fabric doors, windows (acrylic), lights, shapes and forms. Just let your imagination flow.



Fabric Lite Monter

Designing the layout for Fabric lite is easy. Just follow the given sizes and consider the 4 cm width of the vertical poles. When you have a continues layout that stretches over several modules, first design the whole length of the displaysystem and then cut away the pole area - for best result. If some canvases are going to be updated frequently, then consider this in the design.



When making a layout that continues over several modules; begin with a background covering the full width (including poles and canvas) and cut away the 4 cm width of the vertical poles after finishing the design.

Canvas/Design size of modules

Total widths (including vertical poles) of combined, 250 cm high modules:

- 1 H150 module = 152 cm
- 2 modules (1 x H150 + 1 x C150 module) = 300 cm
- 3 modules (1 x H150 + 2 x C150 modules) = 448 cm
- Add 148 cm width for every additional C150 module...

- H100 module = 102 cm
- 2 modules (1 x H100 + 1 x C100 module) = 200 cm
- 3 modules (1 x H100 + 2 x C100 modules) = 298 cm
- Add 98 cm width for every additional C100 module.

238 cm

H150 & C150
144 cm

H100 & C100
94 cm

Copyright 2010 Ab TETRIX Oy



Fabric Lite
offers more.



Fabric Lite Monter