



Fact Sheet

Canvas size: 1355 x 975 mm
Guarantee: 10 years
Canvas guarantee: 3 years
Weight: 7 kg (total)
Height: 1000 mm
Width: 860 mm
Depth: 400 mm

Price includes:

- Counter
- Black Wrap
- + Optional: Print
- + Optional: Fabric Wrap



TETRIX
 portable displays

TETRIX - Portable Displays

Head Office:

Jaakonkatu 13
 68600 PIETARSAARI - JAKOBSTAD
 FINLAND

Web: www.tetrix.fi
 e-mail: info@tetrix.fi
 Mobile: +358 50 4000 023

Optional fabric wrap:



Aegean Royal Cobalt Steller Forest



Flame Madison



Platinum Shadow Eclipse

!!! Color samples are approximate and will never accurately match the exact color on the monitor due to variations in monitor settings.



Designing

Counter: TRX Standard Oval

Design size

Width: 1361 mm
Height: 981 mm

Visible canvas size

Width: 1355 mm
Height: 975 mm

Get started

Create a work space template that equals the design size. Mark the visible canvas size and start designing.

Use only design software

Use a software that is suitable for graphic design and that allows you to use CMYK colors and vector format fonts.

Resolution

The resolution of pictures should not exceed 150 ppi. For a sharp picture 75 ppi is enough yet avoid going under 100 ppi for best result.

Photos and logos

We recommend .TIF raster- and .EPS vector formats.

Colors

We use only CMYK colors in print. No spot colors are available.

Fonts

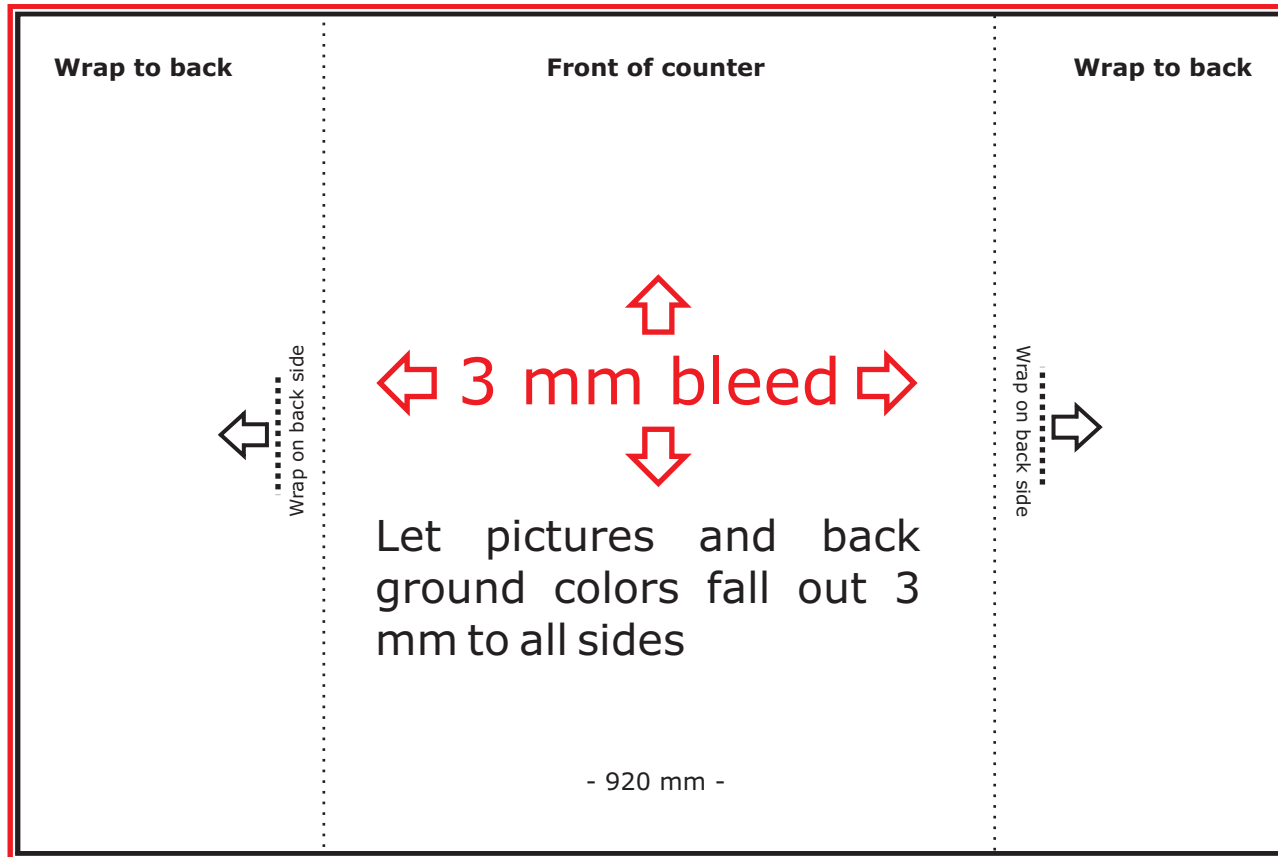
Always convert all fonts to vectors before making a Acrobat PDF. No exeptions.

Creating a pdf

Please send all material in PDF format. Euroscale Coated Version 2. Set the resolution to 150 ppi. No bleed or crop marks required.

Flight Check

- The design size is correct
- You are aware of the visible size
- All fonts are converted to vector
- All photos and pictures are CMYK
- ppi is between 100-150
- The pdf profile is Euroscale Coated V2



- The visual front side of the counter is approx. 920 mm wide
- Avoid putting crucial info on the parts that wraps to the back side
- The fabric wrap option is made to fit on delivery.

Using

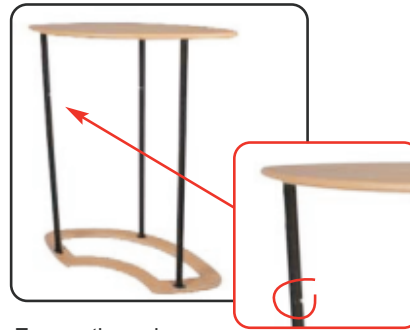
Counter: TRX Standard Oval



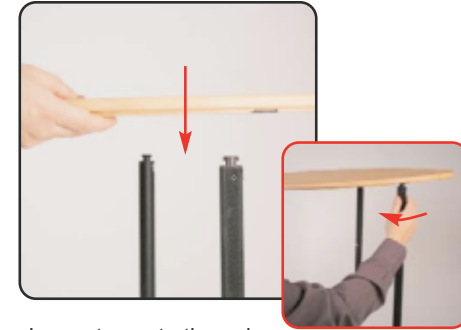
Kit includes: Top, base, tambour wrap, internal shelf and 3 twist & lock poles (2 poles have hook fastener attached)



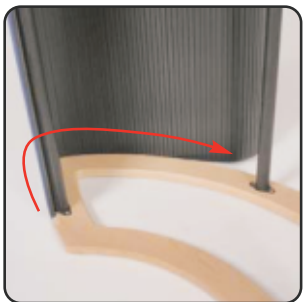
Place the two poles with hook fastener into the fittings located at the rear of the base. Place the remaining pole into the fitting at the front of the base. Twist to lock the poles into place.



Ensure the poles have their slots nearest to the top of the unit.



Lower top onto the poles. Unfasten each pole and then refasten to secure the top to the base.



Attach the vertical edge of the wrap to the pole using loop fastener. Feed the wrap around the base, fitting into the groove securely.



Feed the wrap around the top at the same time as the base to ensure an even fit.



Finally fit the shelf into the unit, locating onto the 3 pole slots.

